



### FFI has complete lift slide systems and solutions, including hardware, handles, tracks, weather-seal, and other accessories.

- The brand of choice of North American door manufacturers
- Higher quality materials
- The only 15-year warranty, best in industry testing
- Stocked in USA providing just-in-time delivery

### FFI Special Features

- Stainless steel for all moving parts in choice of two grades (304 or 430)
- Kynar painted components meet the highest standards of AAMA 2605-98
- Integrated edge-pulls for easy operation of pocket doors
- One-piece lock for up to 8'8" tall doors (up to 14' with extensions)
- All connections are stainless steel pins and bolts (no set screws)
- Half-height gears and 10-pack gears reduce your system costs

FFI SST Lift Slide hardware and tracks have been used on doors obtaining DP (Design Pressure) of up to +85.0 / -85.0 psf. Multiple door and window manufacturers using FFI hardware have passed TAS 201, TAS 202, and TAS 203 testing in accordance with Florida Building Code for High Velocity Hurricane Zone and Miami-Dade County requirements. Ask FFI for recommendations based on your desired panel size and track configurations.



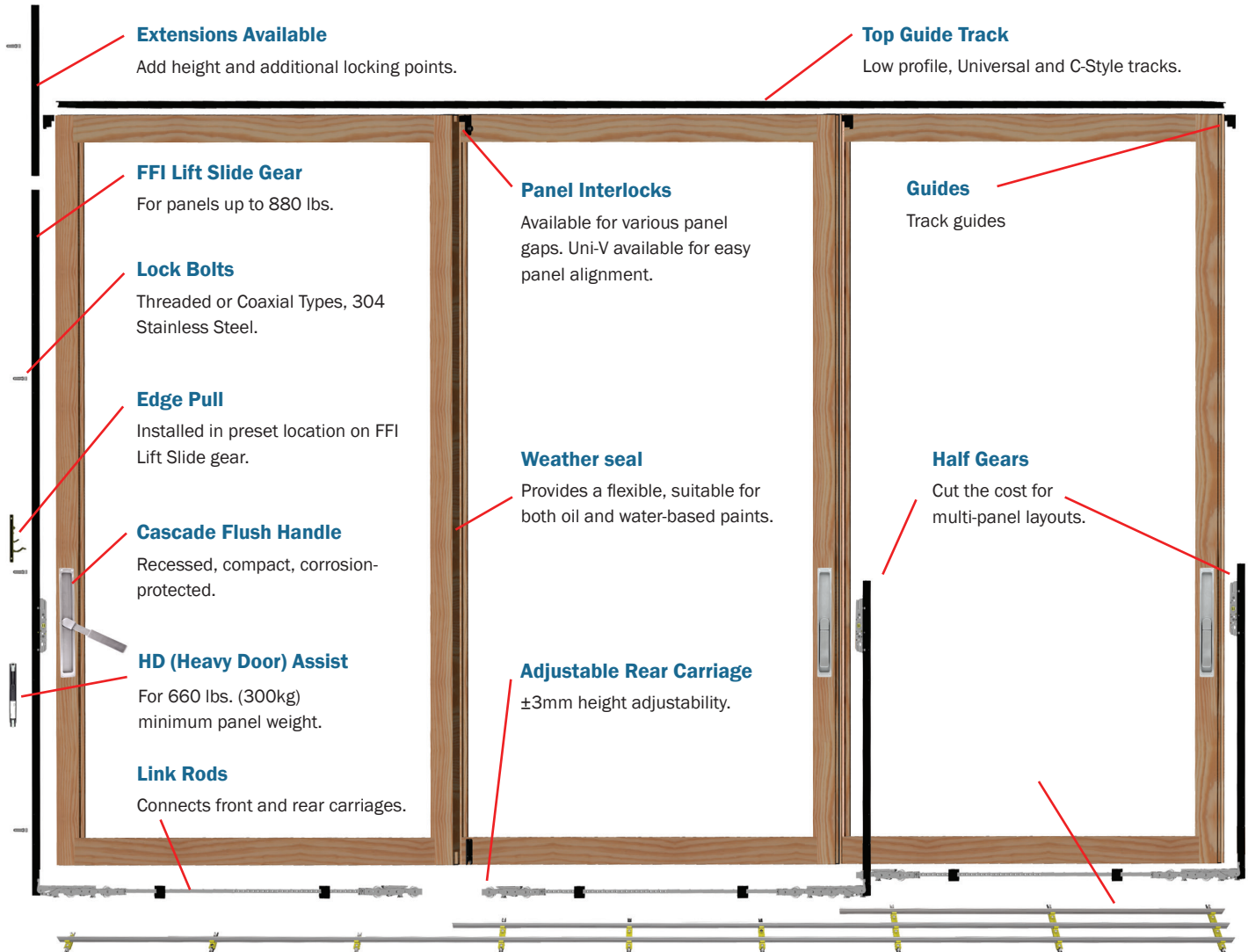
Adjustable stainless steel carriages with integrated cleaning brushes and +/- 3mm height adjustment.



SST gears have integrated edge pull knock out.

## What is it?

Lift Slide panels lift doors and weather-seal up off the bottom track to allow very large panels to glide easily and quietly, with no friction. Panels can stop at any position for easy access and ventilation.



## Why Lift Slide?

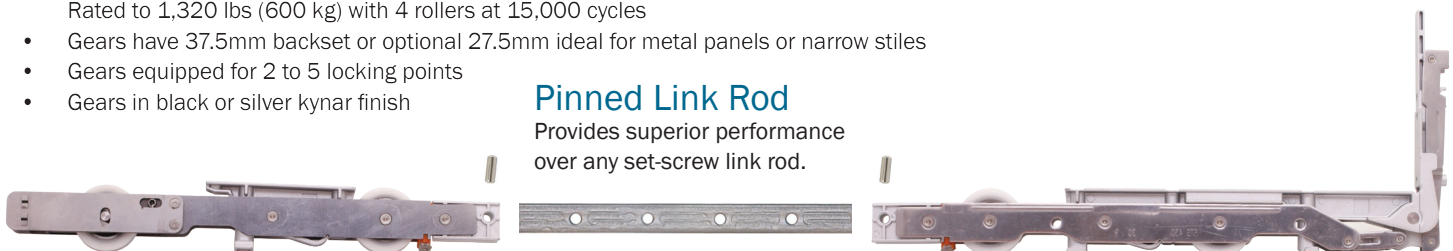
- Maximize views and bring the outdoors in
- Larger openings with fewer panels and more glass, compared to standard sliders or bi-fold doors
- Flexibility of design applications: window walls, pocket doors, corners, and more
- Excellent protection against air & water infiltration; has been employed on hurricane-tested doors
- LEED credits for Indoor Environmental Quality for Natural Ventilation, Daylighting, and Views

## Applications and Options

- Carriages available in standard model and UltraVue low profile carriages for minimal sightlines
- Residential and commercial: patios, balconies, resorts, restaurants, museums, and more
- Rated to 660 lbs (300 kg) per panel with 2 rollers at 100,000 cycles
- Rated to 880 lbs (400 kg) per panel with 4 rollers at 100,000 cycles
- Rated to 1,320 lbs (600 kg) with 4 rollers at 15,000 cycles
- Gears have 37.5mm backset or optional 27.5mm ideal for metal panels or narrow stiles
- Gears equipped for 2 to 5 locking points
- Gears in black or silver kynar finish

### Pinned Link Rod

Provides superior performance over any set-screw link rod.

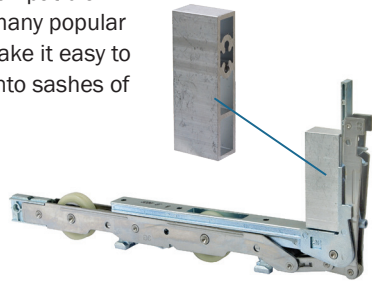


## Track Options & Accessories

Go to Fenestration.net for more options.

### Sash Guides for Aluminum and Vinyl Doors

FFI Lift Slide systems are compatible with aluminum doors and many popular vinyl profiles. The guides make it easy to attach FFI Lift Slide gears into sashes of most any material.



### FFI FASTrack and FASTrack Drainage Systems

Fast, easy and adjustable installation, FASTrack and FASTrack Drainage System are both compatible with the optional Interlock Drainage Kit. Contact FFI for brochure, installation guide and BOM calculator.



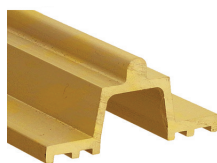
### Climatech

Fiberglass reinforced threshold.



### Ventilation Keep

Holds lift slide panel in place for natural ventilation.



### Brass Track

Variety of top and bottom track for all applications.

## Door Handles & Pulls

Go to Fenestration.net for full door handles & pull offering.



**LS100 Classic**  
ORB Finish  
(Removable)



**LS300 Sierra**  
Polished Brass  
Handle Set



**LS400 Cascade**  
Stainless Steel  
(Flush)



**LS100 Classic**  
Satin Nickel  
Handle Set



**Phoenix**  
Stainless Steel  
Handle Set



**LS400 Cascade**  
Stainless Steel  
Handle Set



**Edge Pull**  
Fully compatible with  
integral knockout on  
FFI gears.



**Flush Pulls**  
Matching pulls for screens

Visit us at [www.fenestration.net](http://www.fenestration.net) for more information



Cascade handle sits flush into stile

Got Questions? We can handle it.

**FFI: Better, faster, reliable... Let us show you how.**

- We make it easy – with CAD drawings, bill of materials, and more.
- Samples for Hurricane Testing and other development needs.
- FFI has in-stock components ready to ship for your just-in-time needs.



**Functional Fenestration Inc.**  
Hawthorne, CA • Phone (800) 677-0228  
[www.fenestration.net](http://www.fenestration.net) • [sales@fenestration.net](mailto:sales@fenestration.net)