

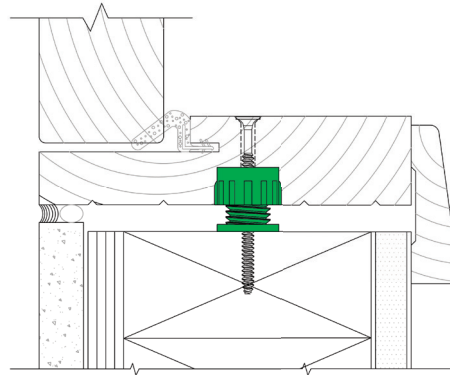


Features - Rapid Spacer Shims

These adjustable spacers are for swift and accurate fitting of door and window frames, and consist of an anchoring body and threaded set screw. Rapid Spacers are inserted in the framing uprights, one for each fixing screw, and allow recovery of play between frame and wall, alignment, and plumbing of the window/door frame.

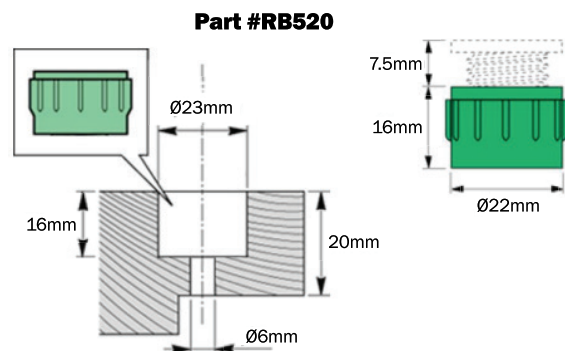
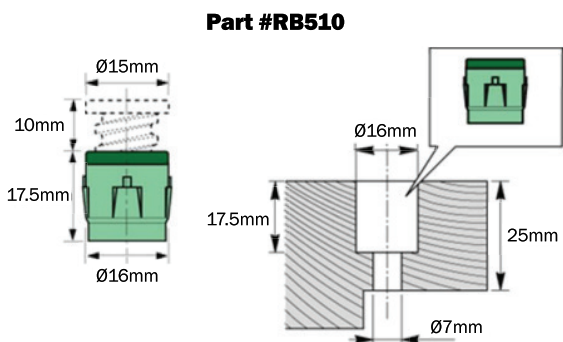
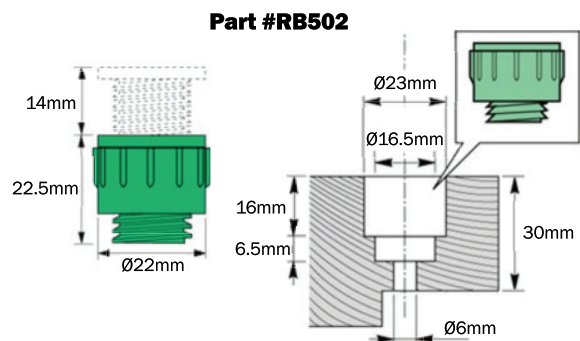
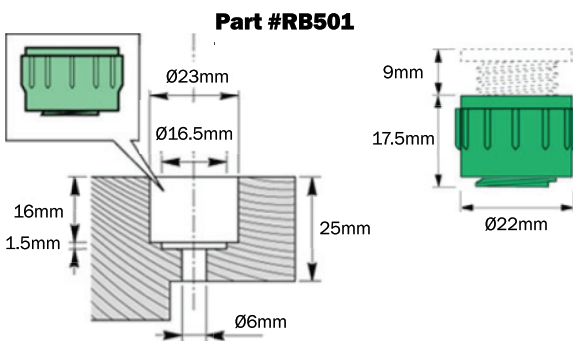
Installation

1. Drill housing for the Spacer with a two-diameter drill bit.
2. Insert Rapid Spacer in the prepared housing.
3. Adjust space and plumb the frame by turning the threaded set screw with hexagonal key.
4. When done positioning, fix the door or window frame with a thread-forming or self-drilling screw.



Why use one Rapid Spacer over another?

RB501 and **RB502** are the same except for the adjustment distance. RB501 adjustment distance is 9mm and RB502 is 14mm, therefore the minimum frame thickness also is different. Both RB501 and RB502 use a 5mm hex wrench, so the fixing screw diameter cannot exceed 5mm. **RB510** has an adjustment of 10mm and a smaller diameter body, and therefore may be used in narrower frames or even side by side on wide frames. RB510 uses a 6mm adjustment hex wrench, so the fixing diameter can be 6mm or smaller. **RB511** is designed for installation into masonry. It's the same as the RB502 except RB511 uses an 8mm hex wrench to allow for an 8mm diameter or smaller masonry wall anchor and then a smaller diameter fixing screw (not shown below; ask for CAD file). **RB520** has a smaller minimum frame thickness of 20mm (3/4"), as well as lower cost. RB520 uses a 5mm hex wrench, so the fixing screw diameter cannot exceed 5mm.

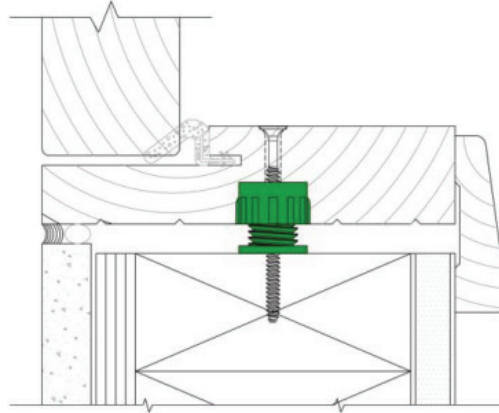


Note: Diagram dimensions are in mm for precision with the manufacturer's specs. (1" = 25.4 mm)
 CAD files for individual spacers available on request.
 Minimum Frame Thickness for RB520: **20mm** (approx. 3/4")
 Minimum Frame Thickness for RB501 and RB510: **25mm** (approx. 1")
 Minimum Frame Thickness for RB502 and RB511: **30mm** (approx. 1-3/16")

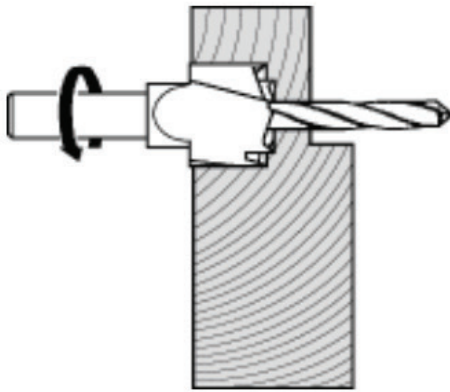
RAPID SPACERS

For wood doors and windows

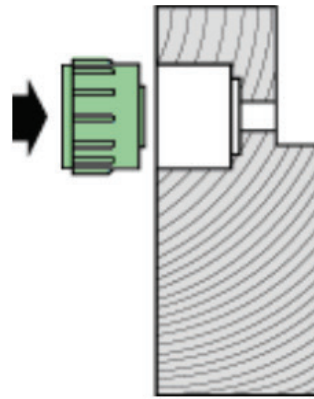
Door or window fitting example



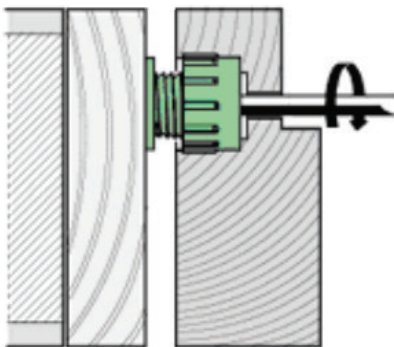
1. A countersunk hole for the spacer is drilled in the upright of the frame



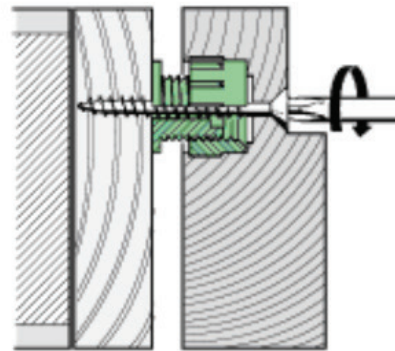
2. The Rapid Spacer is inserted into the frame.



3. The space is adjusted and the window or door frames are aligned by turning the adjustment screw with the hex key.



4. When positioned, the door or window frame is at a fixed length.



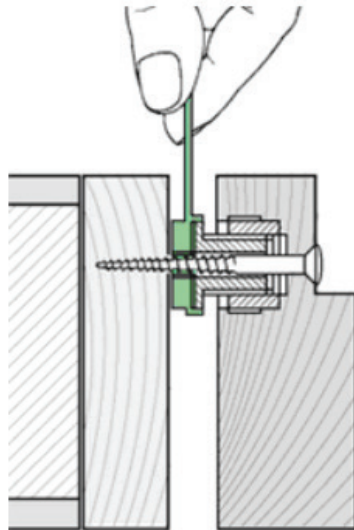
Installation Tips

1. Start with 2 Rapid Spacers on the bottom of the frame.
2. Then work your way up, placing one spacer on each side. For a typical window frame example, placing spacers at approximately 1/4 and 3/4 distance up the frame should be effective.
3. Spacers may not be necessary on top of the frame, and it should be considered that if the wall settles for example, it could cause unnecessary misalignment of the frame.
4. For aesthetic finishing, you may want to install wood caps or plugs (not included) to conceal the screws.

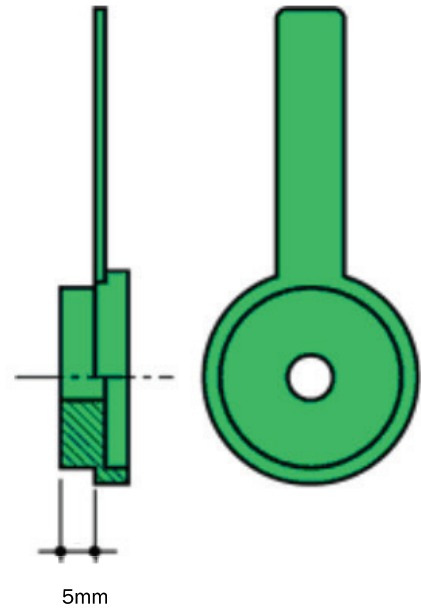
RAPID SPACERS For wood doors and windows

Optional distance piece for Rapid Spacers

On rare occasions, it may be necessary to create a greater distance than normal. In this case, place one or more distance pieces, part # RB505, between the spacer and the trimmer. Using the special "handle" it is easy to fit the distance piece to the Rapid Spacer. Before tightening the fixing screw, turn the distance piece until the handle no longer protrudes from the frame.



Part #RB505



Drill bits for Rapid Spacers

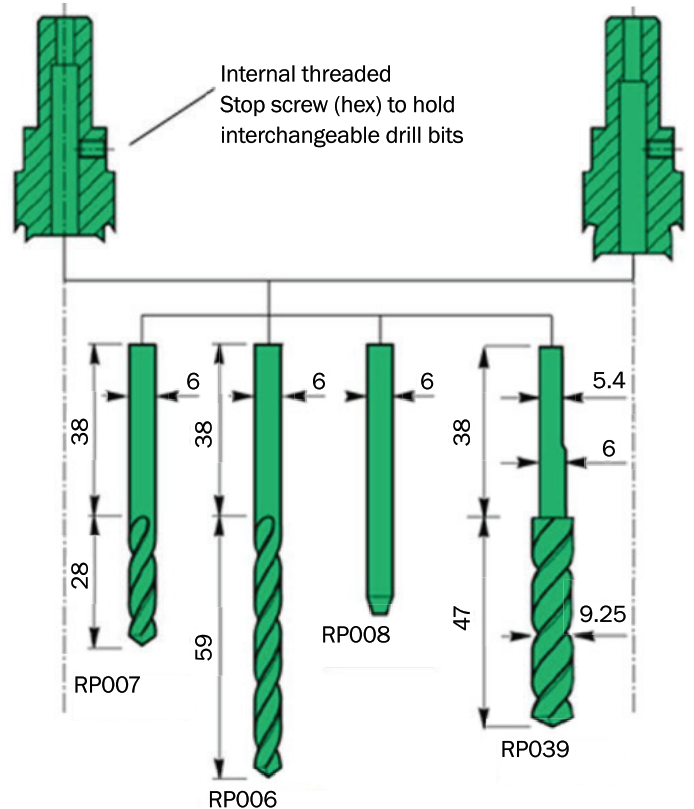
Countersunk holes are drilled in the uprights of the window and door frames, using a basic drill bit (RP004 or RP005) connected to an interchangeable drill bit (RP006, RP007 or RP039) through the center, and locked by a threaded, internal hex stop screw. If Rapid Spacers are to be installed in doors or windows that already have a fastening hole, you can replace the interchangeable drill bit with a guide pin (RP008).

RP004

Basic drill bit for RB501

RP005

Basic drill bit for RB502



Item #	Description
RP004	Basic drill bit for Part #RB501
RP005	Basic drill bit for Part# RB502 or RB511
RP006	(For frames >38 mm ≤ 62 mm) 6 mm diameter - long drill bit insert
RP007	(For frames ≤ 38 mm) 6 mm diameter - short drill bit insert
RP008	Guide pin - 6 mm diameter
RP039	9.25 mm diameter - short drill bit for Part# RB511
RP053	Basic drill bit for Part# RB520

Note: For RB510, drill bits are not available

Hexagonal T-Key

In zinc plated steel with nylon handgrip for the installation of Rapid Spacers.

Part#	Diameter A	Length L
RH004	5mm	175mm
RH008	6mm	190mm
RH010	8mm	285mm

Figure 1: Dimensions

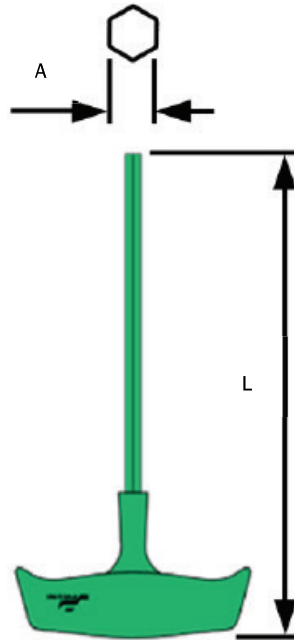
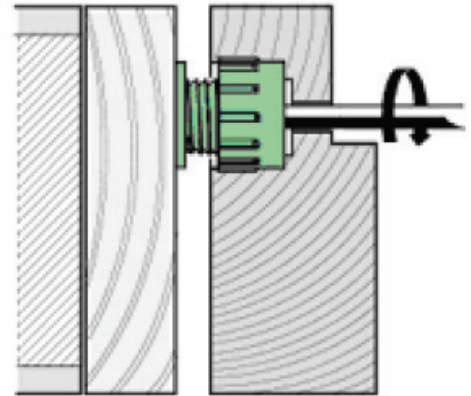


Figure 2: Example



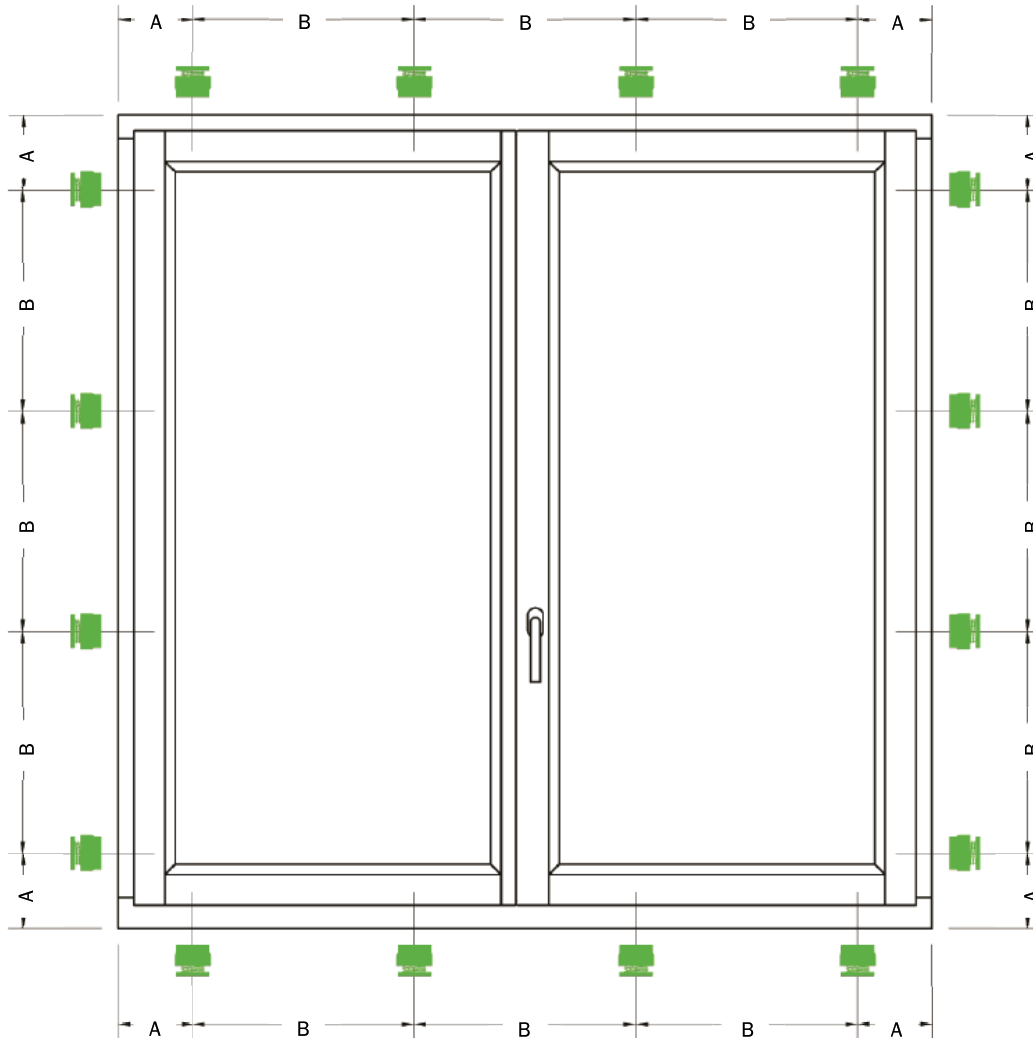
Parts List

Order Code	Description	Unit	Box
RB501	Rapid Block Spacers	Pcs	2,000
RB502	Rapid Block Spacers	Pcs	2,000
RB505	Distance piece with handle	Pcs	1,000
RB510	Rapid Block Spacer	Pcs	2,000
RB511	Rapid Block Spacer	Pcs	2,000
RH004	5mm hexagonal T-Key for RB501, RB502, RB520	Pcs	1
RH008	6mm hexagonal T-Key for RB510	Pcs	1
RH010	8mm hexagonal T-Key for RB511	Pcs	1
RP004	Basic drill bit for RB501	Pcs	1
RP005	Basic drill bit for RB502 or RB511	Pcs	1
RP006	6mm diameter - long drill bit insert	Pcs	1
RP007	6mm diameter - short drill bit insert	Pcs	1
RP008	Guide pin - 6mm diameter	Pcs	1
RP039	9.25mm diameter drill bit (with 6mm diameter shank) for RB511	Pcs	1
RP046	Rapid Block spacer wood kit	Pcs	1
RP053	Drill bit for RB520, use with RP007 insert	Pcs	1

Appendix 1: Recommended distance between spacers

Spacers may be used on all 4 sides of the frame (though it is not required).

The installer can decide which sides will have spacers to square up the frame to the rough opening.



A = 4 to 6" (100 to 150mm)

B = 19.5" (500mm) Max

Max load each spacer = 418lbs (190kg)

Questions? We can handle it.

Faster reliable support. Let us show you how.

- We make it easy - CAD drawings, bill of materials, and more
- Samples for Hurricane Testing and other development needs
- In-stock components ready to ship for your just-in-time needs