

Stainless Steel Hardware

for Top-Hung sliding doors and windows



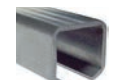
Applications: Exterior doors, pocket doors, barn doors, interior sliding room dividers, closet doors, industrial buildings, animal enclosures, pantry doors, shutters... and so much more.

- SST Track** Made-in-USA, stainless steel (316-L marine grade) self-cleaning track.
- SST Carriages** Stainless steel (316-L marine grade) chassis with stainless steel ball bearings.
- Superior wheels** PETP plastic wheels are quiet, strong, UV-resistant, corrosion-resistant & durable.
- Carriage options** Options include stainless steel wheels, 4-wheel-drive, and bi-fold carriages.
- Capacity** For doors up to 1,300 lbs. (600 kg).
- Tested** Products are tested to Class 6 Standards of 100,000 cycle testing.
- Finish options** Brushed and polished track are available.
- Stock systems** T250 (80 lbs), T300 (165 lbs), T400 (350 lbs), T480 (660 lbs).



T480 sliding shutters, Fritz Johnson architect

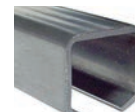
SST systems	door weight	Track W x H	Lengths available
T250	up to 80 lbs	25 x 25 mm	6, 8, 12, 20 ft
T300	81 - 165 lbs	30 x 28 mm	8, 12, 20 ft
T400	166 - 352 lbs	40 x 38 mm	8, 12, 20 ft
T480	353 - 660 lbs	48 x 47 mm	8, 12, 20 ft
T400/T480 bifold	up to 450 lbs	-	8, 12, 20 ft
T560	661 - 1300 lbs	56 x 58 mm	13, 20 ft



T300



T400



T480

Optional SST Track Finishes



Brushed finish



Polished finish

to order

For a complete SST door or window system, order a track; two carriages, carry brackets and track stops; wall or ceiling brackets; and a floor guide. See www.fenestration.net catalog section D for part numbers and recommendations.

Optional Accessories

for SST and ALU



brackets



SST floor guide



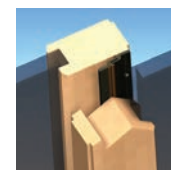
flush pulls



rotary pull



edge pull



FFI Panel Interlock

Contact FFI Customer Service for product details and ordering info: 800-677-0228 or service@fenestration.net

ALU FFI ALU top-hung sliding door hardware



self-cleaning track



ALU 40



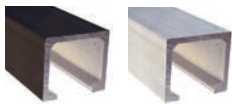
ALU 80



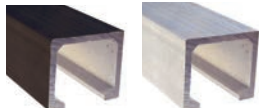
ALU 135

“Top-hung” doors are hung from a top track and carriage system, slide easily and allow a smooth floor—no bottom track, no protruding sill, no trip-hazard.

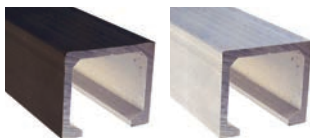
dark bronze finish silver finish



ALU 40



ALU 80



ALU 135



wall brackets

to order

For a complete ALU door or window system, order a track, a carriage kit, and wall brackets.

See www.fenestration.net catalog section D for part numbers and recommendations.

Applications	Interior pocket doors, room dividers, pantry doors, closets and more.
ALU Track	Made-in-USA, unique self-cleaning shape.
Finish options	Class 1 Anodized aluminum track, in silver or dark bronze.
ALU Carriages	Galvanized steel chassis with ball bearings.
Superior wheels	PETP plastic wheels are quiet, strong, UV-resistant, corrosion-resistant & durable.
High Capacity	For doors up to 330 lbs. (150 kg).
Tested	Products are tested to Class 6 standards of 100,000 cycle testing.
Stock systems	ALU 40 (90 lbs), ALU 80 (176 lbs), ALU 135 (330 lbs).

ALU systems	door weight	Track W x H	Lengths available
ALU40 light doors	1 - 90 lbs	26 x 25 mm	6, 8, 12 ft
ALU80MF low profile	91 - 120 lbs	31 x 27 mm	6, 8, 12, 20 ft
ALU80 standard	121 - 176 lbs	31 x 27 mm	6, 8, 12, 20 ft
ALU100	177 - 220 lbs	35.5 x 39.5 mm	12, 20 ft
ALU135 heavy doors	177 - 330 lbs	41 x 39 mm	12, 20 ft



No Flat Spots

The advanced plastic formula in FFI's PETP wheels is highly stable and won't develop flat spots; nylon wheels on other brands develop flat spots over time.

ALU100 IP Soft Close System



Reduces door speed on closing and opening function.

ALU100 Soft Close complies with ADA accessibility codes for max operating force of 5 lbs.

Contact FFI Customer Service for product details and ordering info: 800-677-0228 or service@fenestration.net