



SENTINEL M3

OPEN EASILY, CLOSE SECURELY, LIVE COMFORTABLY

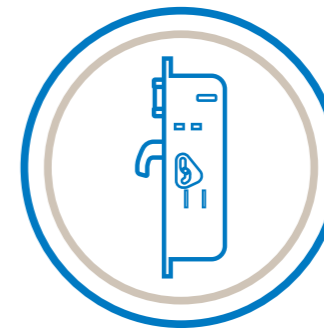


Open, Close, Live



SENTINEL

OPEN EASILY, CLOSE SECURELY, LIVE COMFORTABLY



SENTINEL, the new automatic multipoint lock, designed to protect your entrance door, always, like a true sentinel.

More comfortable, more innovative, more secure.

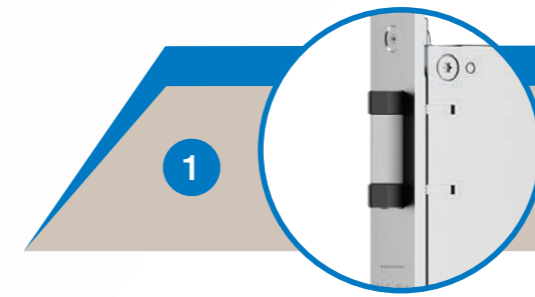
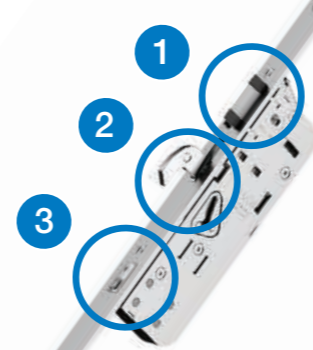
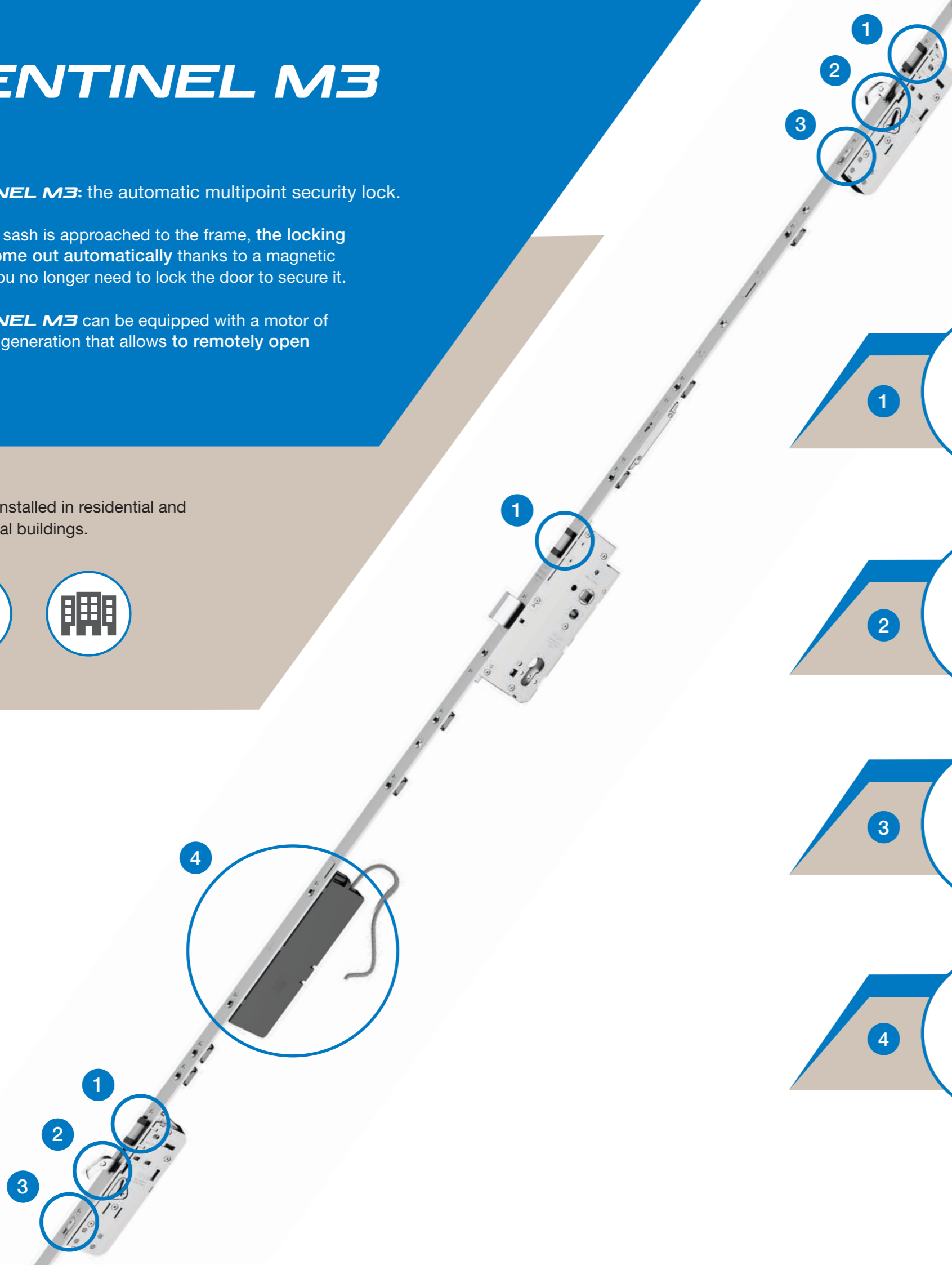
SENTINEL M3

SENTINEL M3: the automatic multipoint security lock.

When the sash is approached to the frame, the locking points come out automatically thanks to a magnetic control: you no longer need to lock the door to secure it.

SENTINEL M3 can be equipped with a motor of the latest generation that allows to remotely open the door.

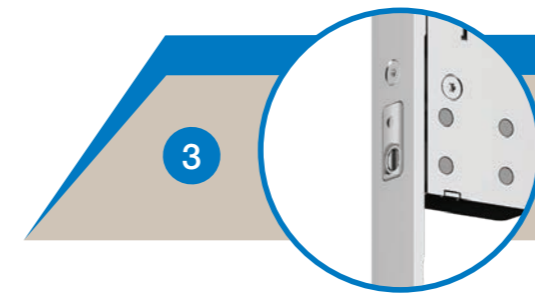
It can be installed in residential and commercial buildings.



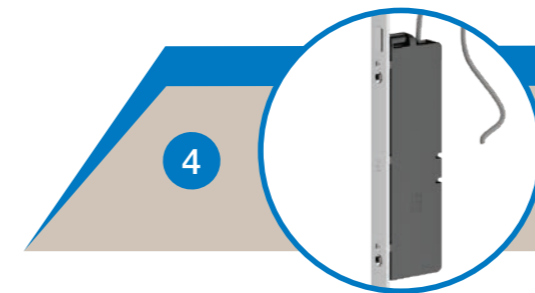
Three polymer-coated latches ensure maximum fluidity in sash opening and closing.



Two strong hooks made of hardened steel ensure the best protection from break-in attempts.



A magnet system allows to release the hook as soon as the sash shuts on the frame.



Optional motorization allows the door to be opened by electronic control.

THE FEATURES



SECURITY AND TECHNOLOGY

The hook is all about security: it offers a burglar-proof guarantee with particular resistance to tearing.



COMFORTABLE OPERATION AND RELIABILITY

SENTINEL M3 technology brings smoothness and reliability in the most diverse situations of use.



THERMAL AND ACOUSTIC INSULATION

The locking points are located in order to compress the gaskets, avoiding air drafts and noise from the outside.



1 Latch and hook are very close to each other: the alignment of the door panel and frame and the compression of the seals are achieved by the latch allowing free release of an independent hook. This is to ensure burglar-proof locking in any condition.

2 The anti-cut steel hooks come out in a downward movement and remain locked at the end of the travel. This feature allows the hook to always release even if the spring, over time, should lose strength. Thanks to its geometry, the hook works perfectly with minimum and maximum gap and even if the sash should sag.

3 The hook release mechanism is located close to the hooks and therefore:

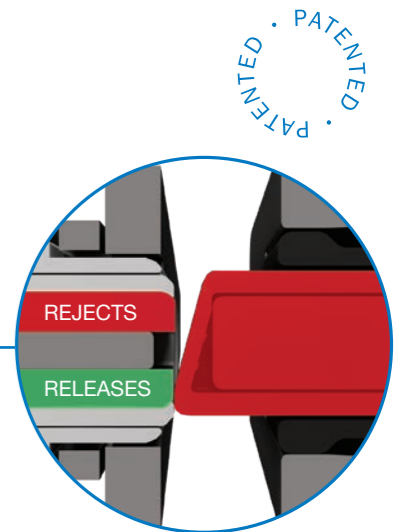
- 1) More precise: it has no play due to component matching tolerances.
- 2) Faster: the proximity makes their release prompt and precise.



THE INNOVATIVE TECHNOLOGY OF SENTINEL M3

The release of the hooks is achieved when the **translating magnet** of the striker compensates the gap and makes contact with the release device of the lock. The mechanism works on contact and not on magnetic field which could lose strength adjusting the hinges (max gap 16 mm).

The hooks are released by means of an **oriented polarity** system. This technology prevents early, unintentional or inappropriate hook releases and prevents damage to the frame.

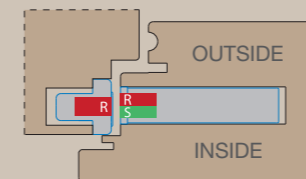


SENTINEL M3:

- Suitable for Entrance doors antiburglar resistance up to RC2 according to EN 1627
- Tested according to EN 12209
- Tested according to prEN 15685
- Tested according to 14846

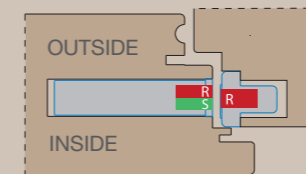


Right hand

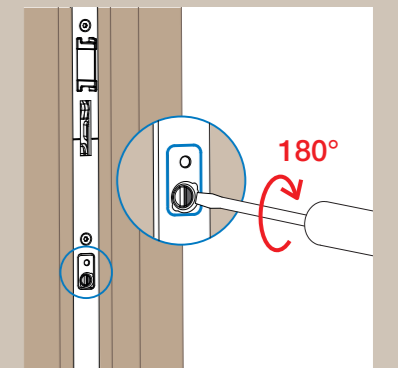


R=REJECTS
S=RELEASES

Left hand

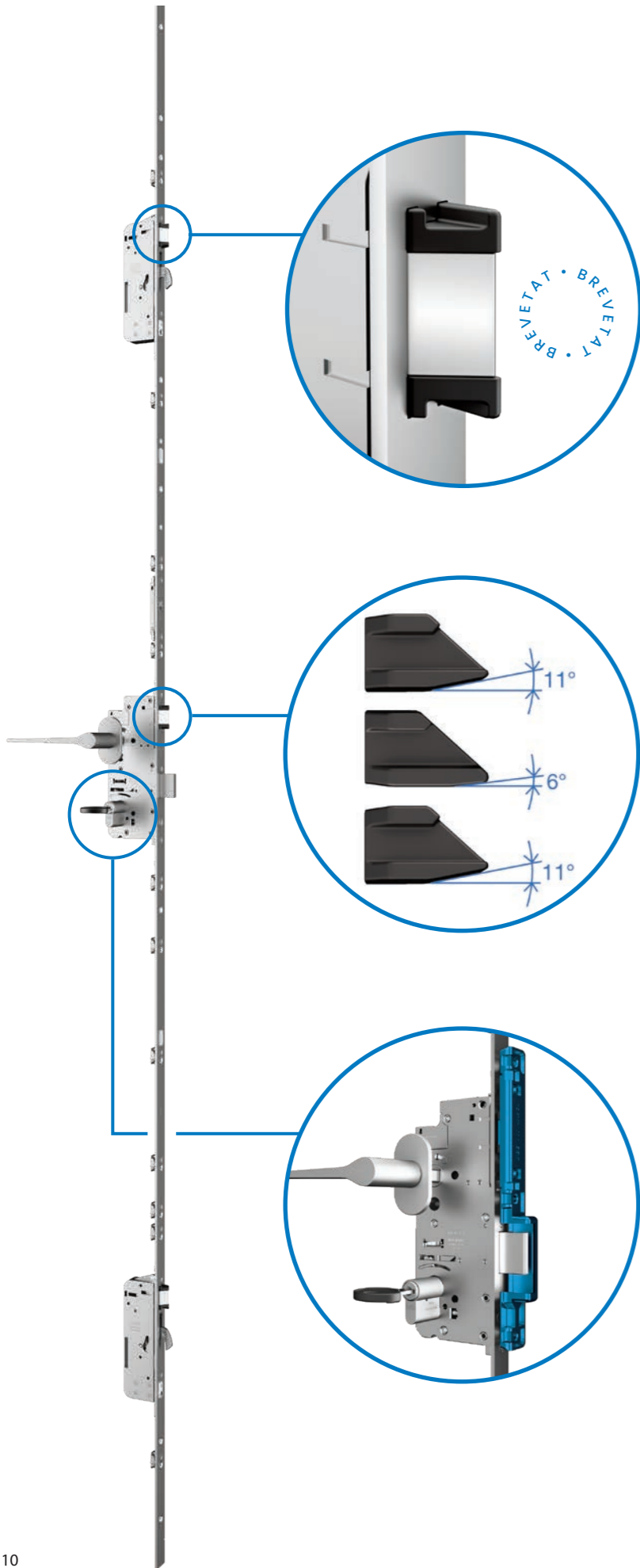


This innovative system can be oriented according to the hand of the door, ensures the correct hook release and avoids damage to the frame.





COMFORT



The **DUO latch** has a metal core for strength, and the entire edge is made of polymer **to reduce the friction of the latch with the striker and the face plate**. Reducing the friction between the latch and face plate is important to maintain **smoothness in opening** even when the sash tends to warp and push the latch against the face plate.

The **latches have different geometries**: the center latch has an inclination of 6° while the upper and lower latches have an inclination of 11°. With this inclination, the upper and lower latches are cleared already after being retracted by just half a millimeter. This makes the lock **smooth and reliable**.

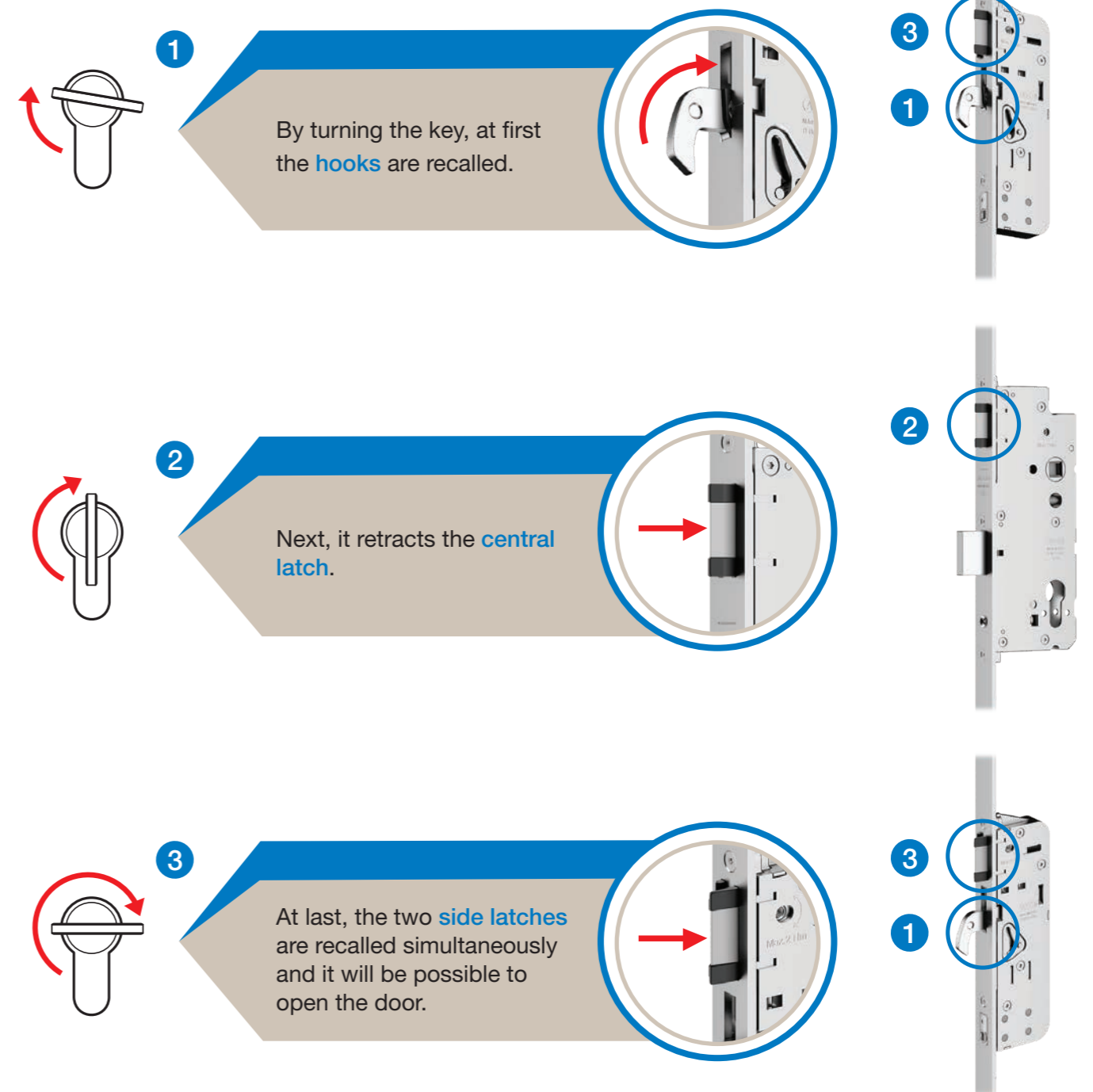
The **central bolt** comes out only through the key that **blocks the movement of the handle**: it is a security feature against drilling of the panel from the outside and for the protection of children. The key locking inhibits the operation of the electric motor.

RELIABILITY

SENTINEL M3:

THE PLEASURE OF OPENING A SECURE AND FLUID DOOR

The opening effort is fractionated by **sequential recall** of the locking points, so that the forces acting on the lock are fractionated.



1 By turning the key, at first the **hooks** are recalled.

2 Next, it retracts the **central latch**.

3 At last, the two **side latches** are recalled simultaneously and it will be possible to open the door.

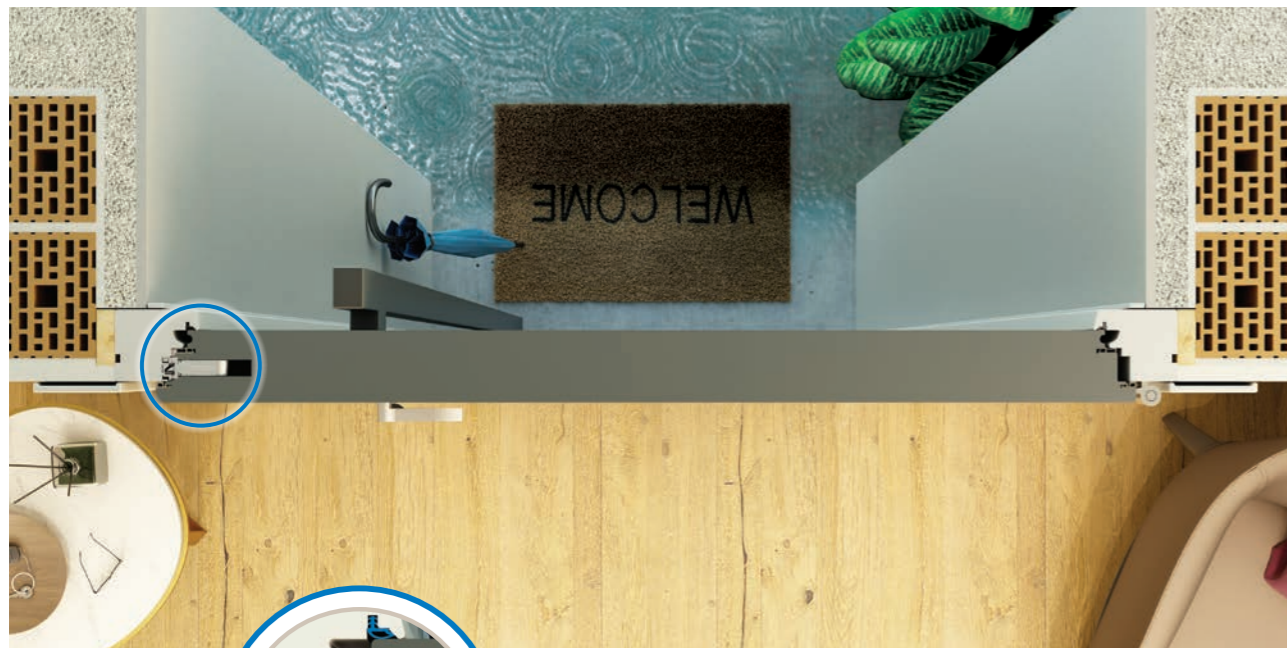




THERMAL AND ACOUSTIC INSULATION

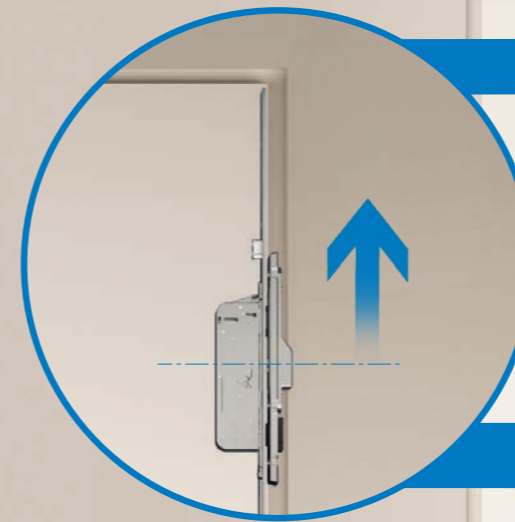
WITH **SENTINEL M3** GOODBYE TO DRAFTS AND NOISE COMING FROM THE OUTSIDE!

The **latch** is very responsive, practically instantaneous, this allows the lock to instantly stop the sash against the frame and to make the most of the kinetic energy to **compress the gaskets**.

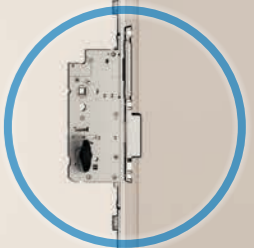
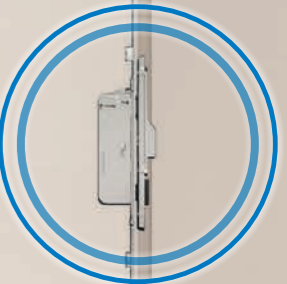


Perfectly compressed **gaskets** create a barrier against the elements and noise from outside.

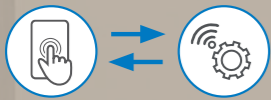
SENTINEL M3 is designed to bring the **locking points** into optimal position and ensure proper gasket pressure.



SENTINEL M3 is available in 3 sizes that allow the **upper locking point** to be located **closer to the top end** of the door.



The motorization of the front door allows opening via smartphone. Ideal for situations that require flexibility and an **access control system**.



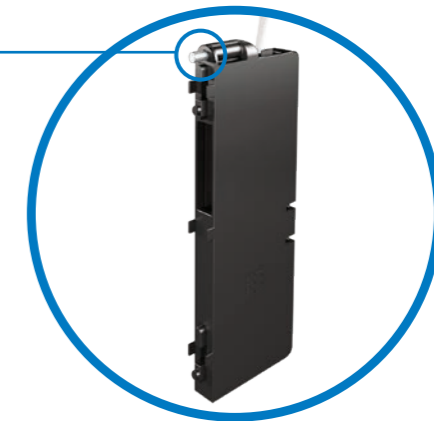
The motor operates at
12 V AC / 12-24 V DC.

STANDARD MOTORIZATION

The standard motor allows, via a dry contact, the motorized opening of the sash **with any access control system**: intercom, keypad, card, biometrics readers, third-party home automation systems.



Need for activation motor **restart** at door open and for door status check.



The motor **can be time-controlled on opening** as needed. This means that the lock can remain open while waiting for passage during the **preset time**, and while opening it immediately resets for closing.





THE LOCK

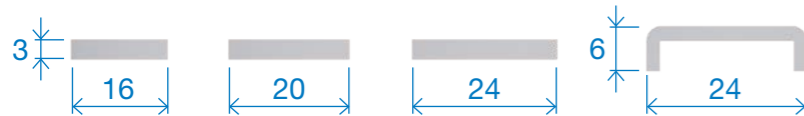
THREE SIZES FOR ALL TYPES OF DOORS

The range includes **three sizes of locks** to bring the locking point on the optimal position and reduce sash warping as much as possible:

- **GR 8:** top locking point at 1650mm (SRH 1800-2100mm)
- **GR 9:** top locking point at 1800mm (SRH 1950-2350mm)
- **GR 10:** top locking point at 2050mm (SRH 2200-2500mm)

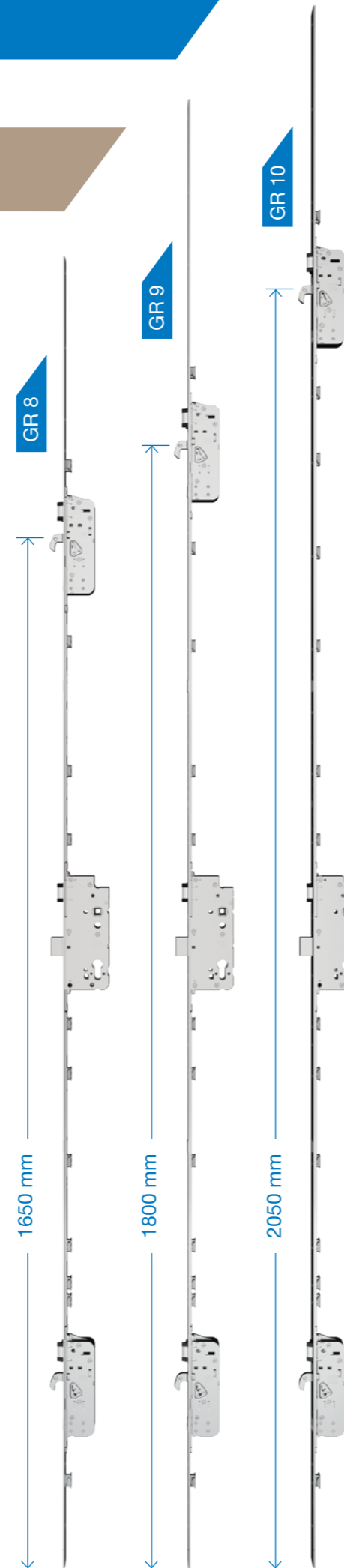
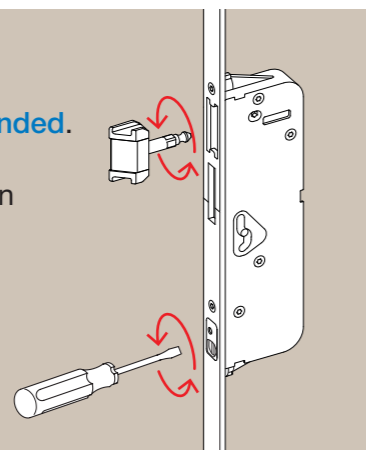
With the use of the extension, up to 3150 mm.

SENTINEL M3 is available in 4 different face plates:



SENTINEL M3 is non-handed.

To change the lock hand, simply change the orientation of the latch and the hook release system.



THE BENEFITS

ATTENTION TO EVERY DETAIL TO MEET EVERY NEED

FACEPLATE ANTI-SWELLING

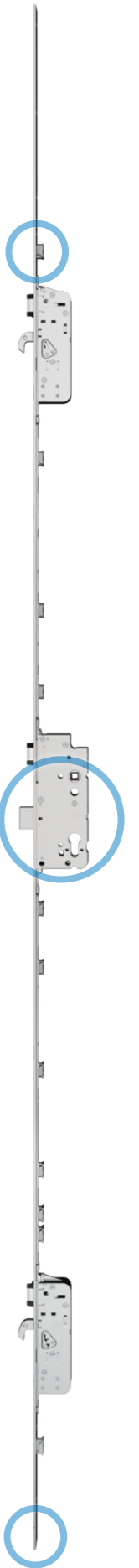
SENTINEL M3 is equipped with a rod guide for each screw hole to prevent the face plate from swelling even with the softest woods. In addition, double screws near the locking points ensure maximum burglar resistance.

BACKSETS AND INTERAXIS

Available backsets: from 35 to 80 mm.

ADJUSTABLE HANDLE HEIGHT

The standard handle height is at 1050 mm, in compliance with regulatory requirements regarding the handle height (measured from the floor) the handle height can be brought to 1020 mm.

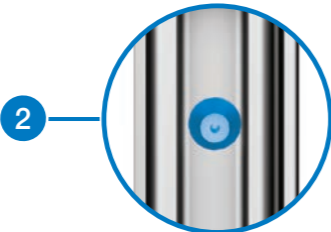


THE STRIKERS FOR TIMBER

Single strikers



Millimetric adjustment (-2 mm to +1 mm): this system allows to optimally pass static and dynamic load tests for anti-burglar tests.



The striker is provided with a **fourth screw hole** to maximize the resistance to burglary tests.



The **screws are inclined** to avoid cracking of the wood vein and achieve greater security.

Technical details:

- Single strikers available for interaxis 9 and 13 mm and for gap 4 and 12 mm;
- One-piece striker available for Interaxis 13 mm;
- One-piece bolt available for Interaxis 13 mm.

For both One-piece strikers and bolts, extensions are available for heights above 2500 mm and for all the three lock sizes.

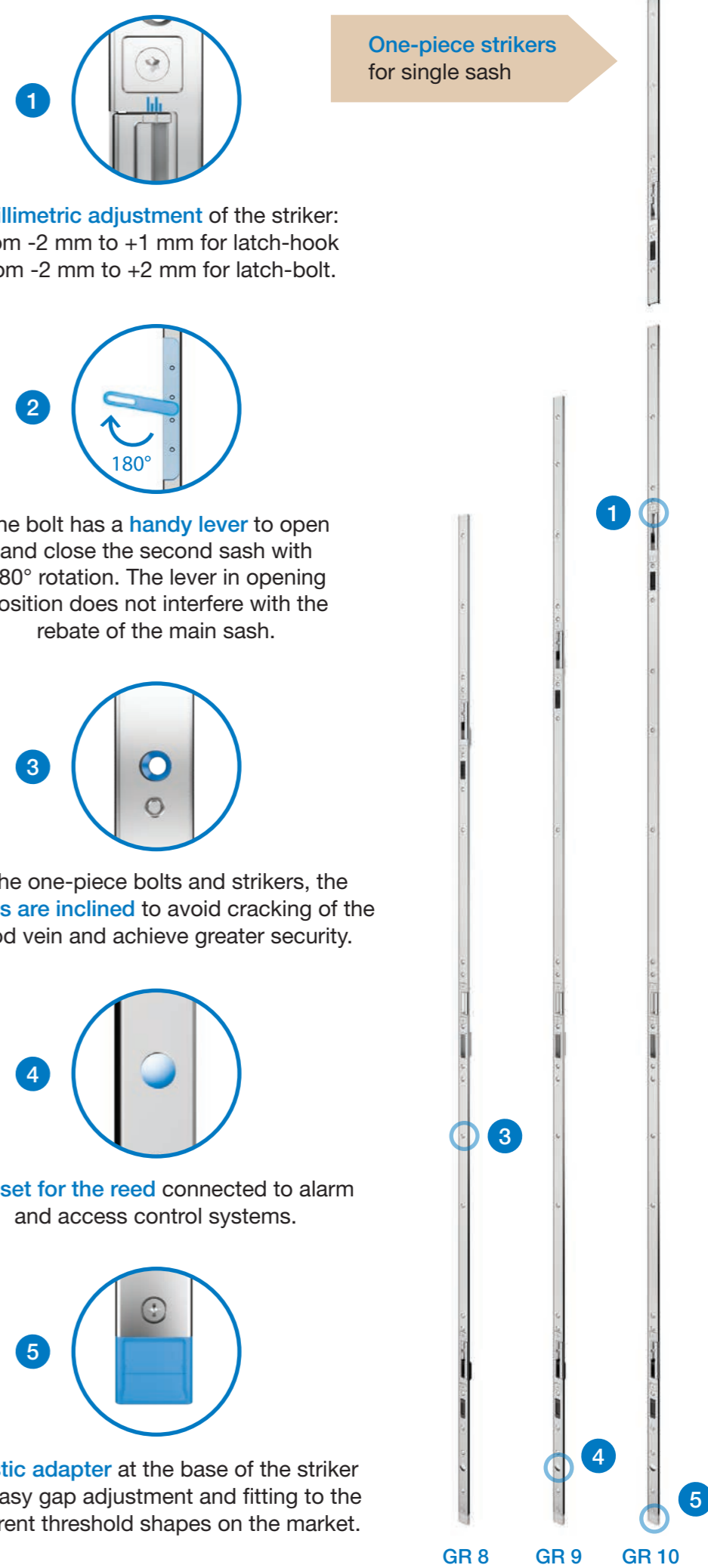
One-piece bolts for double sash



Extension

GR 10 GR 9 GR 8

One-piece strikers for single sash



Millimetric adjustment of the striker: from -2 mm to +1 mm for latch-hook from -2 mm to +2 mm for latch-bolt.

The bolt has a **handy lever** to open and close the second sash with 180° rotation. The lever in opening position does not interfere with the rebate of the main sash.

In the one-piece bolts and strikers, the **screws are inclined** to avoid cracking of the wood vein and achieve greater security.

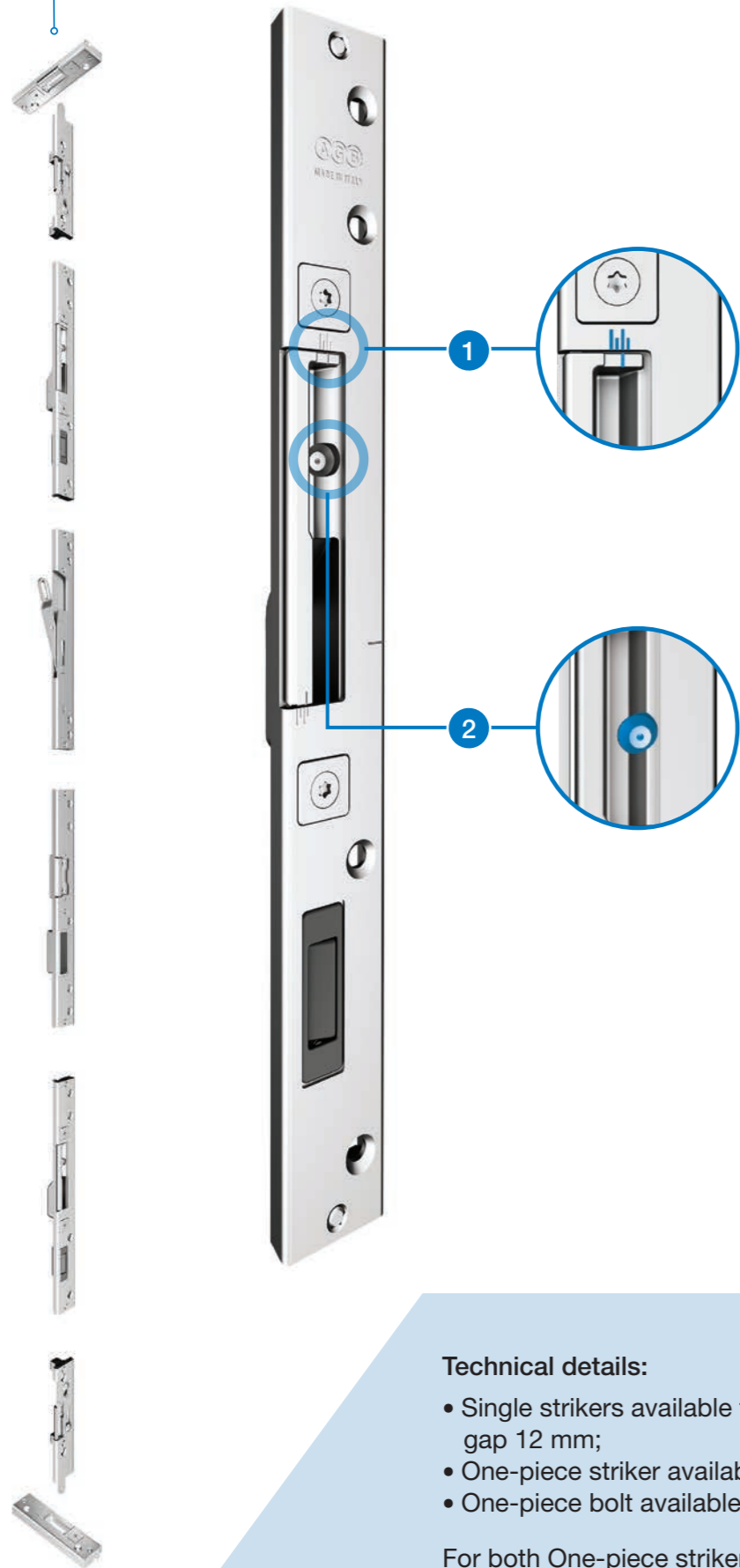
Pre-set for the reed connected to alarm and access control systems.

Plastic adapter at the base of the striker for easy gap adjustment and fitting to the different threshold shapes on the market.

GR 8 GR 9 GR 10

THE STRIKERS FOR PVC

Single strikers



Millimetric adjustment (-2 mm to +1 mm): this system allows to optimally pass static and dynamic load tests for anti-burglar tests.

The striker is provided with a **fourth screw hole** to maximize the resistance to burglary tests.

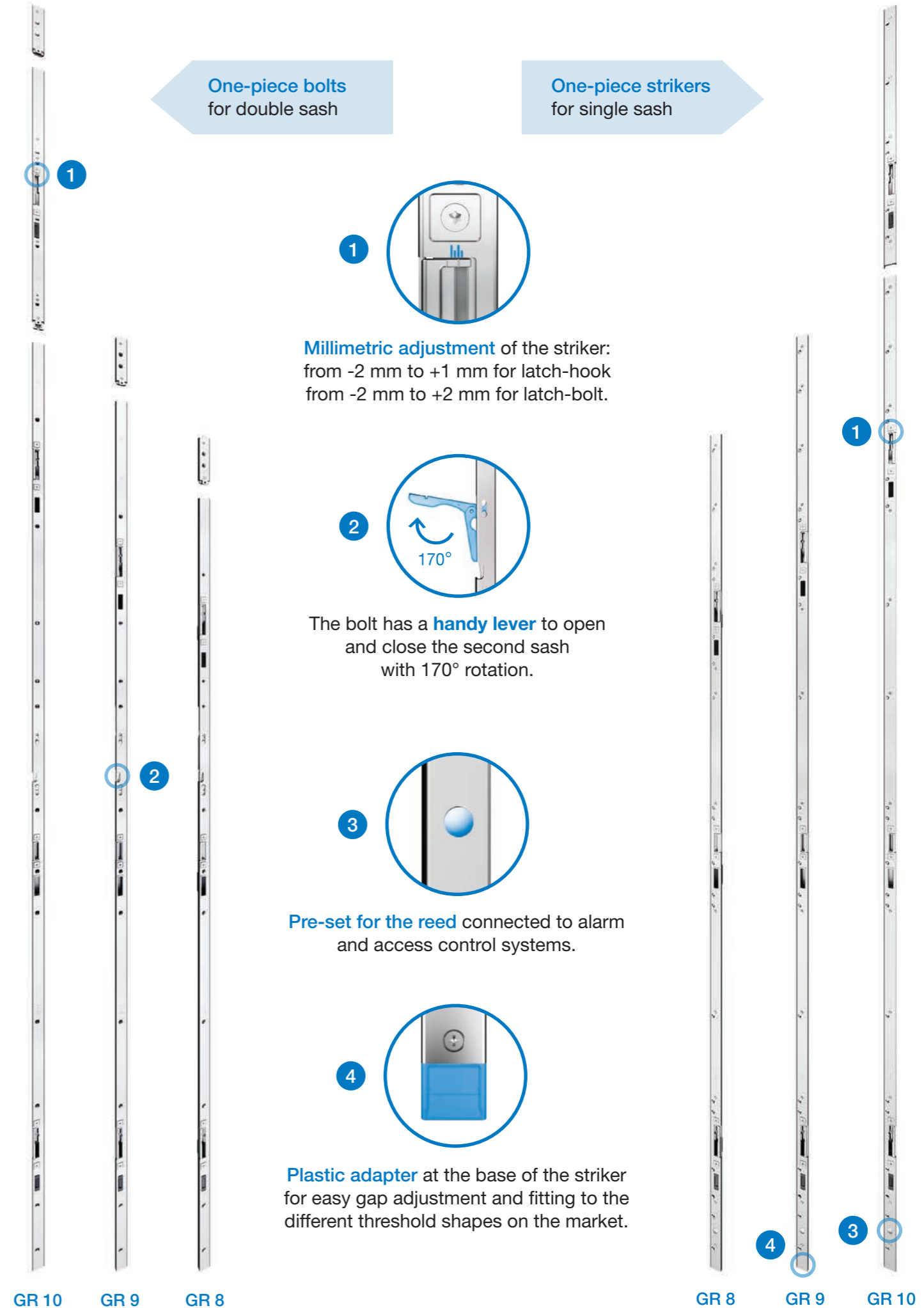
Technical details:

- Single strikers available for interaxis 13 and 15 mm, gap 12 mm;
- One-piece striker available for Interaxis 13 and 15 mm;
- One-piece bolt available for Interaxis 13 and 15 mm.

For both One-piece strikers and bolts, extensions are available for heights above 2500 mm and for all the three lock sizes.

One-piece bolts for double sash

One-piece strikers for single sash



Millimetric adjustment of the striker: from -2 mm to +1 mm for latch-hook from -2 mm to +2 mm for latch-bolt.

The bolt has a **handy lever** to open and close the second sash with 170° rotation.

Pre-set for the reed connected to alarm and access control systems.

Plastic adapter at the base of the striker for easy gap adjustment and fitting to the different threshold shapes on the market.

THE STRIKERS FOR ALUMINIUM

Single strikers

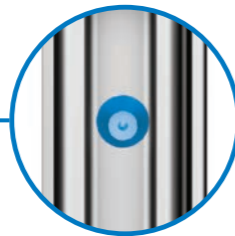


1



Millimetric adjustment (-2 mm to +1 mm): this system allows to optimally pass static and dynamic load tests for anti-burglar tests.

2



The striker is provided with a **fourth screw hole** to maximize the resistance to burglary tests.

Technical details:

- Single strikers available for european groove, Interaxis 9 and 13 mm, gap 12 mm;
- Single strikers available for Alu-wood systems;
- One-piece striker available for european groove Interaxis 13 mm;
- One-piece bolt available for Interaxis 13 mm;
- One-piece bolt available for Alu-wood systems;

For both One-piece strikers and bolts, extensions are available for heights above 2500 mm and for all the three lock sizes.

One-piece bolts for double sash



1

2

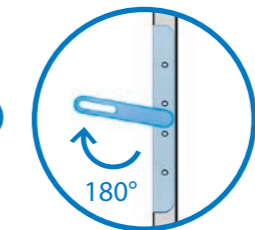
GR 10 GR 9 GR 8

One-piece strikers for single sash



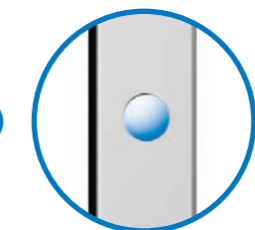
1

Millimetric adjustment of the striker: from -2 mm to +1 mm for latch-hook from -2 mm to +2 mm for latch-bolt.



2

The bolt has a **handy lever** to open and close the second sash with 180° rotation. The lever in opening position does not interfere with the rebate of the main sash.



3

Pre-set for the reed connected to alarm and access control systems.



1

3

GR 8 GR 9 GR 10

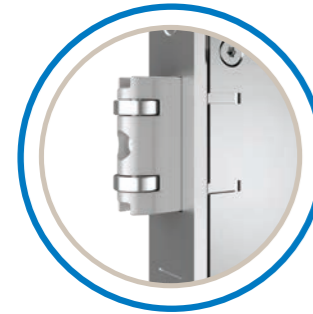
MAKE UP YOUR SENTINEL

CUSTOMIZING IS THE KEY WORD!

SENTINEL M3 can be customized with different accessories according to requirements.



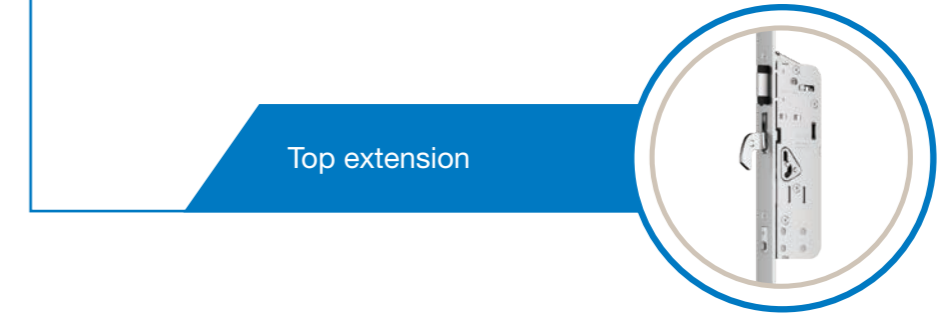
Opening limiter



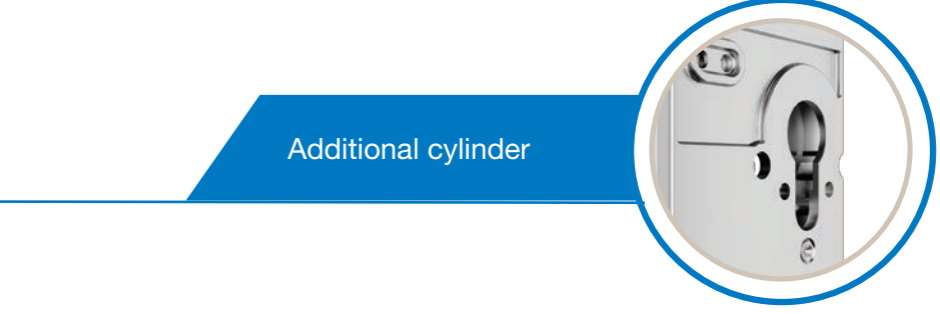
Roller latch



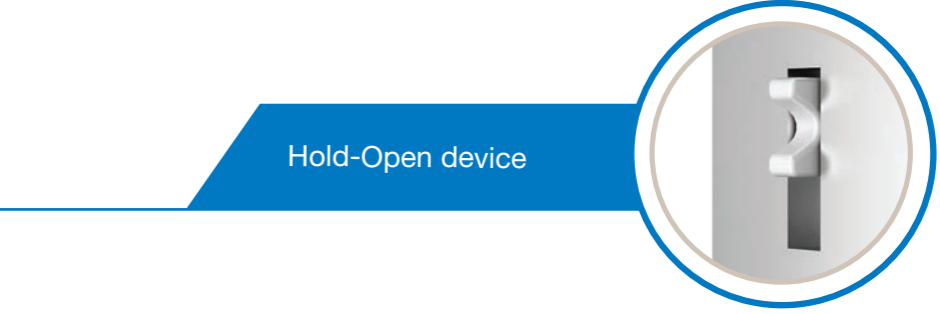
STD motor



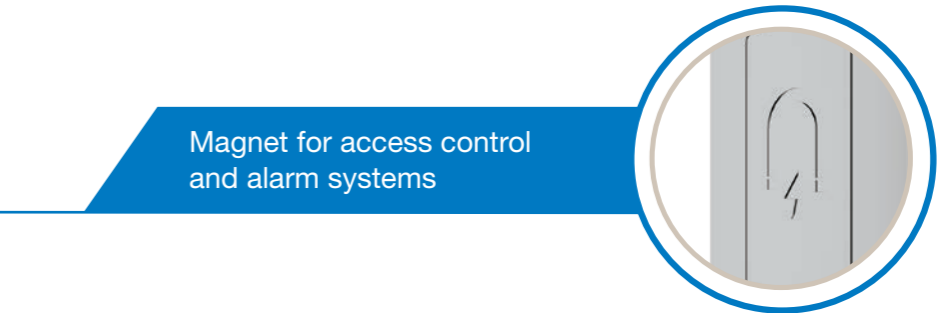
Top extension



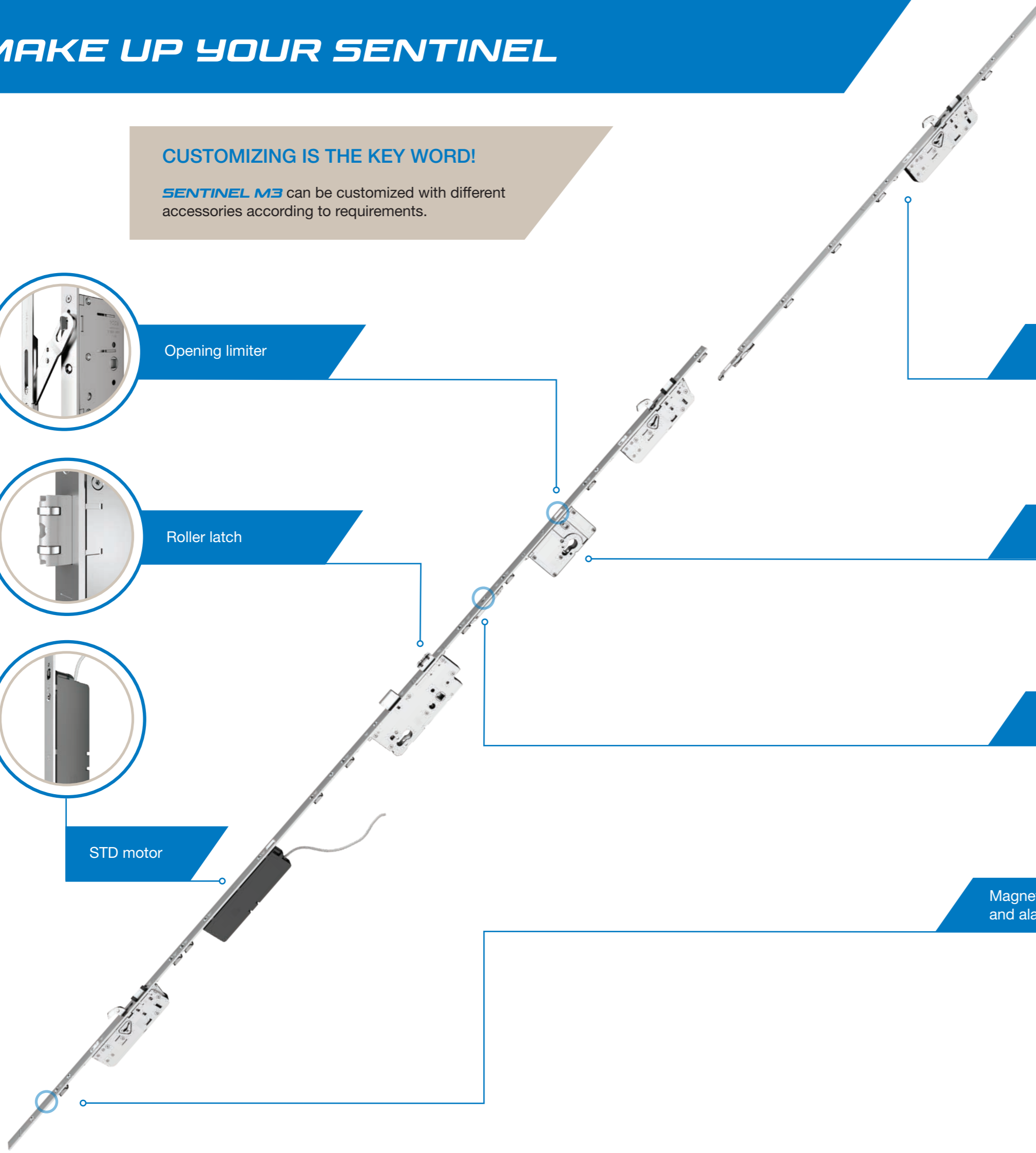
Additional cylinder



Hold-Open device



Magnet for access control and alarm systems





OPENING LIMITER

It is a security device that **allows the door to be opened limited to 8,5 cm**: this mechanism helps to prevent malicious intruders from entering the house. It can also act as **children care**, as it does not allow the door to open fully. It can be deactivated from the outside either with the cylinder key or by means of the motor.



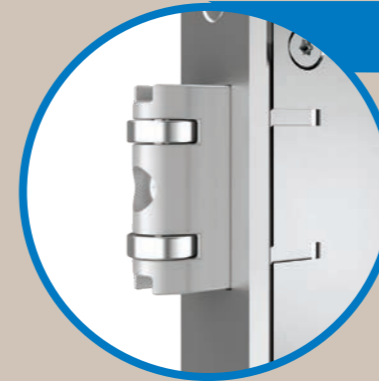
ADDITIONAL CYLINDER

Allows the lock to be locked by preventing access to key holders of the main cylinder (e.g. service personnel). Acts on the moving rod.



HOLD-OPEN DEVICE

The free passage device **retains latch and hooks and allows exit and re-entry into the house without the need for a key**. It can also be applied at a later stage without having to make new dedicated millings.



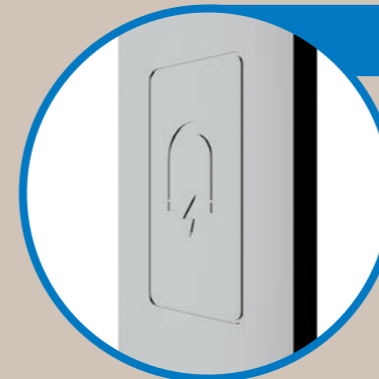
ROLLER LATCH

The roller latch **allows the sash to be retained when the lock is in the free passage mode**. This allows the sash to remain against the frame even under moderate drafts. It is particularly suitable for stores or frequently passing rooms. It necessarily requires the use of the free passage device and overhead door closer.



TOP EXTENSION

Allows to create doors **higher than 2500 mm**.



MAGNETS

The magnet **is applied to the lock** to allow the position of the sash to be detected for access control and/or alarm system. On the other hand, the magnet **is applied to the frame or the second sash** at the motor height to allow the lock to be reset when the sash is opened.



MOTOR

The motor it can be activated with a pulse via the simple button on the intercom, with numeric keypad, biometric readers, etc.



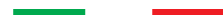
SENTINEL

OPEN EASILY, CLOSE SECURELY, LIVE COMFORTABLY



This product was
made entirely in Italy.
The design, production, processing
and packaging are carried out
exclusively on the Italian territory,
into the AGB plants.

100% MADE IN ITALY





Open, Close, Live

Alban Giacomo SpA

Via A. De Gasperi, 75
36060 Romano d'Ezzelino (VI) Italy
+39 0424 832 832
www.agb.it - info@agb.it

MADE IN ITALY